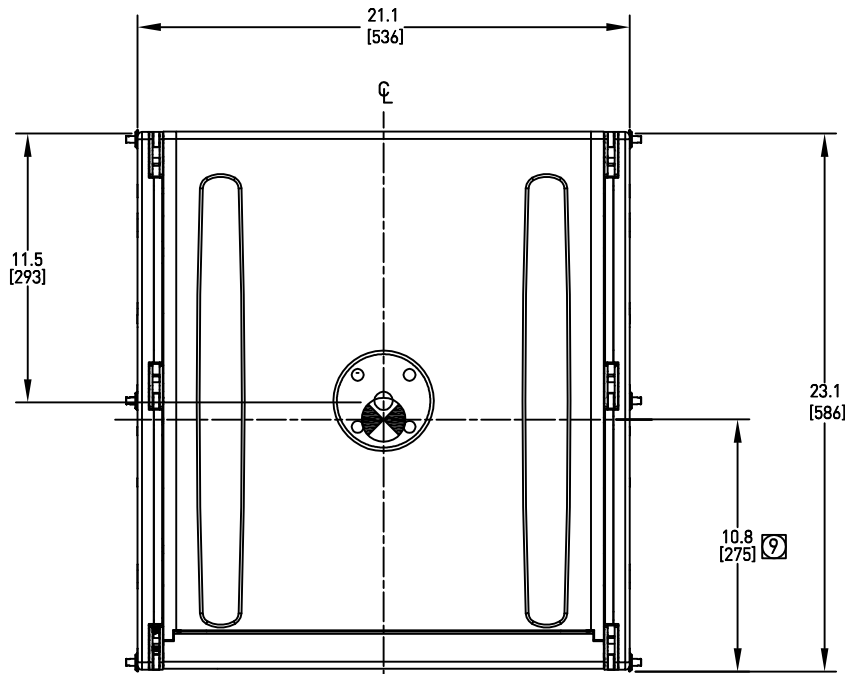


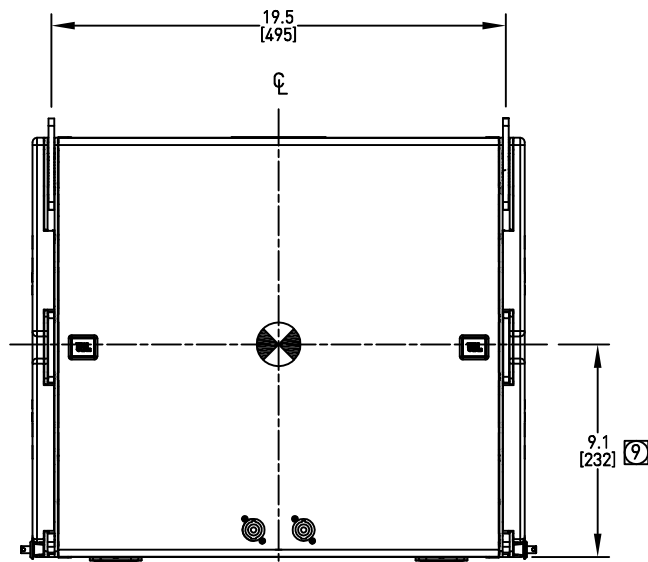
THESE DRAWINGS AND SPECIFICATIONS ARE THE PROPERTY OF JBL INCORPORATED. THEY ARE ISSUED IN STRICT CONFIDENCE AND SHALL NOT BE REPRODUCED OR USED AS THE BASIS FOR MANUFACTURE OR APPARATUS WITHOUT WRITTEN PERMISSION.

ALL MATERIAL SPECIFIED ON THIS DRAWING SHALL CONTINUALLY COMPLY WITH THE EFFECTIVE EU RoHS DIRECTIVE, CURRENTLY 2011/65/EU, INCLUDING ALL AMENDMENTS.

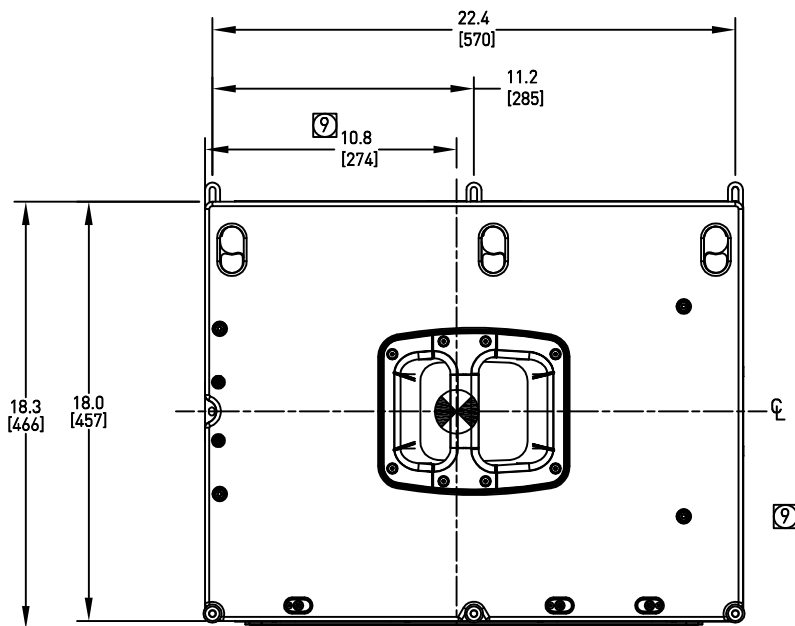
REVISIONS				
LTR	DESCRIPTION	DRFT	DATE	APPR
A	INITIAL RELEASE	EH	09/15/21	



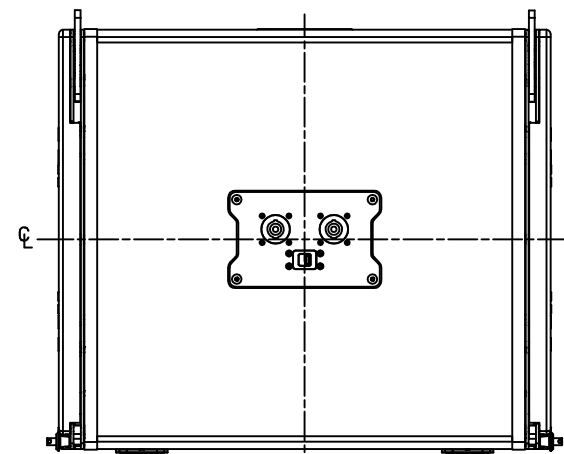
TOP



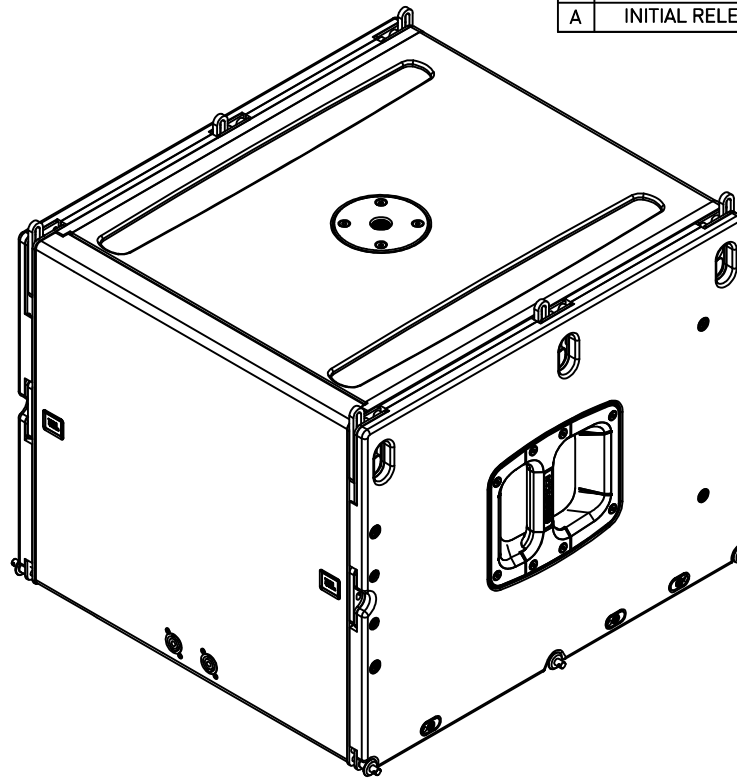
FRONT



SIDES



BACK



⑨ INDICATED DIMENSION ARE TO CENTER OF GRAVITY (CG).

8. SYMBOL INDICATES CENTER OF GRAVITY (CG).

7. SUSPENSION TYPE: CAPTIVE SUSPENSION PLATES, QUICK RELEASE PINS,

6. COMPONENTS: LF (1) 2285H.

5. GRILLE MATERIAL: 16 GA. COLD ROLLED POWDERCOATED BLACK WITH BLACK CLOTH BACKING ON THE INSIDE FACE.

4. INPUT CONNECTORS: (2) NEUTRIK NL4 AND A-B SWITCH ON REAR. (2) NEUTRIK NL4 ON THE FRONT.

3. WEIGHT: 42 KG (92.4 LBS).

2. FINISH: BLACK DURAFLEX.

1. CABINET MATERIAL: 15MM, 18MM AND 1.0" BIRCH PLYWOOD.

NOTES: (UNLESS OTHERWISE SPECIFIED)

#### TOLERANCES

(UNLESS OTHERWISE SPECIFIED)

X.XX ± .063 INCH

X.X ± .125 INCH

ANGULAR TOLERANCE OF 0°±30°

FRACTIONAL DIMENSIONS ± 1/32

\* DIMENSIONS ARE INCHES INCHES [MM]

\* ALL DIMENSIONS ARE FINISHED DIMENSIONS

\* DO NOT SCALE DRAWING

# HARMAN

JBL Professional  
8500 Balboa Blvd  
Northridge, CA 91329  
USA

TITLE  
CUSTOMER DRAWING: VTX B15

SIZE <b>A</b>	DRAWING NO. 1000367693	REV <b>A</b>
------------------	---------------------------	-----------------

SCALE NTS	SHEET 1 OF 1
--------------	-----------------